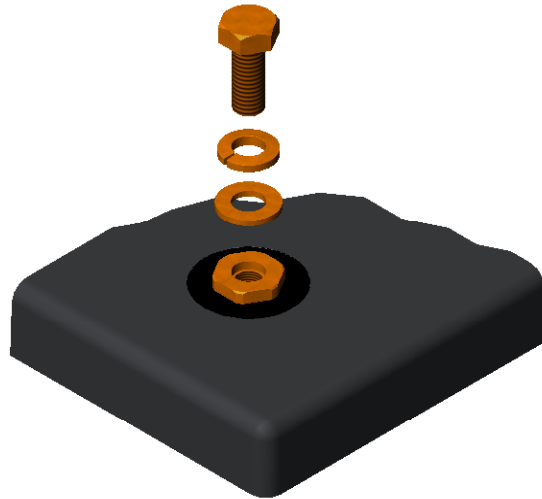
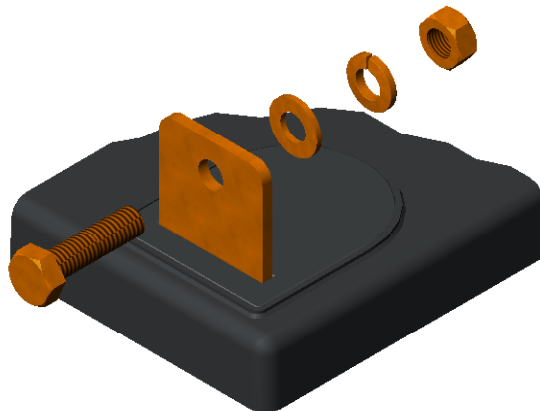


Sun Xtender Battery Terminal Types

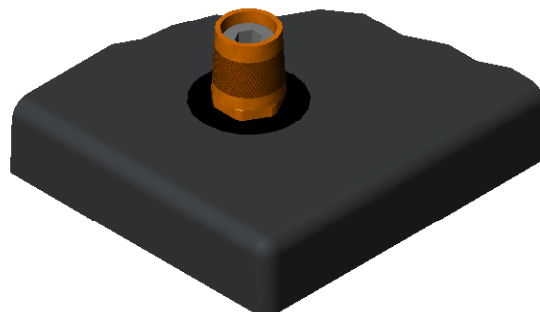
Copper Alloy Corrosion Free Connections for Maximum Conductivity



M8 Threaded Insert (Copper Alloy)
M6 Threaded Insert for PVX-340T & PVX-420T only



L-Blade Terminal (Solid Copper)
M8 Hardware



"A" - SAE Automotive Post (Copper Alloy)
Available as a separate kit, or installed at the factory
Kit Part Number: 6918